

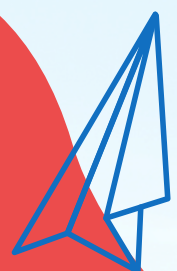
ASPIRE OSHC



# VACATION CARE PROGRAM **ASPIRE YOUNG**

SEPTEMBER / OCTOBER 2025

**BOOK NOW**





# VACATION CARE PROGRAM

## ASPIRE YOUNG

**SERVICE MANAGER:** Shimekha Douglass  
**PHONE:** 0473 596 191  
**EMAIL:** Young@aspire-oshc.com.au

**Monday**  
29/09/2025

### Cupcake Decorating Internal Excursion



Lets see how creative we can get with Morgan, decorating cakes!

- Location: Young Centre
- Vacancies: 15
- Activity start: 11am
- Activity end: 12:30

**\$95**

**Tuesday**  
30/09/2025

### Arts and craft day Centre Day



Lets use our imaginations and see what we can create with some arts and crafts.

- Location: Young centre
- Vacancies: 50
- Leaving centre: All day
- Activity end: All day

**\$85**

**Wednesday**  
01/10/2025

### Flipout Excursion



Today we will be going on the bus to Wagga Flipout. A great day to be had with jumping on trampolines and sliding down slides.

**Permission slips MUST be signed.**

- Location: Wagga Wagga
- Vacancies: 27
- Leaving Centre: 9am
- Returning to Centre: 4pm

**\$120**

**Thursday**  
02/10/2025

### Lambing Flat Museum Excursion



Let's take a trip through time and visit the Lambing Flat Museum. Permission slips **MUST** be Signed.

- Location: Lambing flat muesem
- Vacancies: 30
- Leaving centre: 10am
- Return to centre : 11:30

**\$105**

**Friday**  
03/10/2025

### Tie-dye day Center Day



Bring in some white clothes so we can create some awesome patterns and designs with tie-dye.

- Location: Young Centre
- Vacancies: 50
- Activity start: All day
- Activity end: All day

**\$85**



# VACATION CARE PROGRAM

## ASPIRE YOUNG

**SERVICE MANAGER:** Shimekha Douglass  
**PHONE:** 0473 596 191  
**EMAIL:** Young@aspire-oshc.com.au

**Monday**  
06/10/2025

### Public Holiday



Service Closed

**Tuesday**  
07/10/2025

### Park and picnic

Excursion



Let's go play on the swings, slides and monkey bars at that park then we can have a BBQ and picnic for lunch!

- Location: Carrington Park
- Vacancies: 30
- Leaving centre: 10.30am
- Return to centre: 2pm

**\$95**

**Wednesday**  
08/10/2025

### Sensory play day

Centre Day



Let's get our hands and our brains ready for some different textures and fun!

- Location: Young Centre
- Vacancies: 50
- Activity start: All day
- Activity end: All day

**\$85**

**Thursday**  
09/10/2025

### Dinosaur museum

Excursion



Come with us on a prehistoric adventure to Canberra Dinosaur museum. Permission slips **MUST** be signed

- Location: Canberra
- Vacancies: 27
- Leaving centre: 9am
- Return to centre: 4pm

**\$120**

**Friday**  
10/10/2025

### Gecko Sports

Internal Excursion



Get active and learn the importance of sports and physical fitness with a visit from Gecko Sports

- Location: Young centre
- Vacancies: 20
- Activity start: 11am
- Activity end: 1.30

**\$105**





# VACATION CARE PROGRAM

## ASPIRE YOUNG

**SERVICE MANAGER:** Shimekha Douglass  
**PHONE:** 0473 596 191  
**EMAIL:** Young@aspire-oshc.com.au

**Monday**  
13/10/2025

### Teddy bear Picnic Centre Day



Bring your favorite teddy bear and let's have a picnic and tea party!

- Location: Young centre
- Vacancies: 50
- Activity start: All day
- Activity end: All day

**\$85**

**Tuesday**  
14/10/2025

BACK  
TO  
SCHOOL

**Wednesday**  
15/10/2025

BACK  
TO  
SCHOOL

**Thursday**  
16/10/2025

BACK  
TO  
SCHOOL

**Friday**  
17/10/2025

BACK  
TO  
SCHOOL





# IMPORTANT DAILY INFORMATION

## WHAT TO BRING EACH DAY



Hat



Morning Tea & Lunch



Water Bottle



Backpack



Enclosed Shoes



Sun Safe Clothing

## WHAT WE PROVIDE EACH DAY



Breakfast



Afternoon Tea



Late Snack

## DAILY STAFFING RATIOS

All ratios adhere to National Laws & Regulations. Daily ratios will be based off the activity and can range anywhere from 1:5 - 1:15.



# VACATION CARE IMPORTANT FAMILY INFORMATION

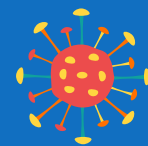


Join our fun filled ASPIRE OSHC Vacation Care program. To make a booking for Vacation Care please 'make a booking' through the [OWNA parent portal](#).



## NO HAT NO PLAY

As a sun safe measure ASPIRE OSHC requires all children and staff to wear a Cancer Council approved hat during high UV periods. In addition, and as required by the Cancer Council and WHS legislation we monitor the UV Index daily to ensure we take all reasonable precautions to protect children and staff from over exposure to the sun.



## ALLERGY AWARENESS

On enrolment, you are required to advise staff if your child has an allergy and identify the allergy on the enrolment form. To ensure we are able to take best care of your child we ask that you also provide information as to the triggers and symptoms of your child's allergy. All efforts will be made by staff to avoid such triggers. All ASPIRE OSHC services are "Nut Free" environments. Children are not allowed to bring nuts of any type into our services. The sharing of food is also not allowed.



## ARRIVALS AND DEPARTURES

You are required to sign your children in and out of the service each day recording arrival and departure time. For safety purposes, it is important that staff are informed of your child's arrival and departure daily.



## APPROPRIATE CLOTHING

As a sun safe measure ASPIRE OSHC requires all children and staff to wear a Cancer Council approved hat during high UV periods. In addition, and as required by the Cancer Council and WHS legislation we monitor the UV Index daily to ensure we take all reasonable precautions to protect children and staff from over exposure to the sun.



## ANAPHYLAXIS

If your child has a diagnosed allergy, before your child can attend the service you must provide a completed coloured allergy action plan including a coloured photo and labelled medication. All medication should be handed directly to staff on arrival. All medications must be on the premises at all times when your child is present. The action plans are to be updated as required (at least yearly) and staff notified of any changes to the action plan (refer to the anaphylaxis policy and procedure).



## MEDICATION

Before we can administer a prescribed medication to your child, we require you to complete a medication authority form. All sections of the medication form need to be completed. Medication can only be administered if the medication is in its original packaging and labelled with the child's name, a current date and the name of the medication and dosage required. (refer to medication policy) Children returning from an illness will require a Doctor's clearance certificate stating they are no longer infectious and are fit to attend care.



## SUNSCREEN

Sunscreen is available at the service, we ask that you apply the sunscreen to your child upon arrival. Staff will supervise re-application during the day. If your child is sensitive or has an allergy to the sunscreen we use, please supply an appropriate sunscreen for your child.



## ASTHMA

If your child has been diagnosed with Asthma, you must provide a current Asthma action /management plan, which needs to have been completed by your treating GP. In addition we require a long term medication form (refer to the asthma policy and procedure).



## PERSONAL BELONGINGS

We recognise that some children may like to bring cherished toys and equipment from home for use during the vacation care program. ASPIRE OSHC cannot take responsibility for lost or damaged items - this includes technology! Tech use can only take place in a designated space at a designated time. These rules will be explained to the children every day before the start of the daily program.